

The Len Pick Trust

(Registered Charity No. 1106598)

Report of the Trustees to 31st March 2012

*A Charitable Trust
for the general benefit of
the townspeople of Bourne, Lincolnshire*



The Len Pick Trust

“Committed to benefiting the townspeople of Bourne”

Annual Report and Financial Statements

Year ended 31st March 2012

Contents	Page(s)
Legal and Administration information	2-8
Chairman’s Report	9
Achievements & Performance	10-16
Financial Review of the Year	17
Meeting our Objectives	17
Future Plans	18
Public Benefit Statement	18
Statement of Trustee’s responsibilities	19
Independent Auditor’s report	20-21
Statement of financial activities	22
Balance sheet	23
Notes to the financial statements	24-29

Cover Picture:

An avenue of trees planted adjacent to Mill Drove Bourne on farm land owned by the Trust to commemorate Her Majesty The Queen’s Diamond Jubilee

The Len Pick Trust

Registered Charity No.1106598
PO Box 92
Bourne
Lincs
PE10 1AD
Web: www.lenpicktrust.org.uk
e-mail: enquiries@lenpicktrust.org.uk

The Trustees present their Report together with the Audited Financial Statements for the Year ended 31st March 2012.

Legal and Administrative Information

(Who we are, what we do and how we do it)

Chairman 2012/13 Mrs R Patel
Vice-Chairman 2012/13 Mr C J Houseago

Foundation Trustees

Mr J C Forster**
Mr G Hyde**
Mr T H Peacock*

Elected Trustees

Mr J H Freear*	(from 01.04.06.)
Mr A Rowe**	(from 01.04.08.)
Mrs R Patel *	(from 01.04.09.)
Mrs K Henderson**	(from 01.04.09.)
Mr C Houseago*	(from 01.04.09.)
Mr G Burrows**	(from 01.04.09.)
Mr K Day**	(from 01.04.12.)

Termination

March 2014
March 2016
March 2013
March 2013
March 2013
March 2013
March 2016

Term

2 nd
2 nd
1 st
1 st
1 st
1 st
1 st

Notes:

The Trustees whose names are marked thus* form the Finance & General Purposes Sub-Committee.

The Trustees whose names are marked thus** form the Grant Making Sub-Committee.

Foundation Trustees serve indefinitely in accordance with the late Mr Pick's wishes.

Elected Trustees serve initially for a four-year term which may be extended for a further four years.



The Len Pick Trust

Brief profiles of our Trustees

Mr Jonathon Forster, a well-known practicing solicitor in Bourne.

Mr Geoff Hyde, a long-term friend of Mr Pick and semi-retired farmer.

Mr Trevor Peacock, a friend and ex-neighbour of Mr Pick who is a retired Architectural Technologist.

Mr John Freear, is a retired local government officer and Past Chairman of The Chartered Institute of Environmental Health.

Mr Andy Rowe, a Chartered Quantity Surveyor and long time President of Bourne Rugby Club.

Mr Gerry Burrows, is a retired technical director of a food processing company.

Mrs Kay Henderson, is a retired finance manager.

Mr Charles Houseago, is the managing director of a major local employer.

Mrs Ranna Patel, is a self-employed business consultant and part time adviser for the Prince's Trust.

Mr Kevin Day, is a lifelong resident of Bourne and an environmental consultant

Management and administration responsibilities for The Trust are delegated to the Executive Trust Manager:

Adrian E Smith FRICS

PO Box 92

Bourne

PE10 1AD

Advisers to the Trustees

Solicitors:

Andrews Stanton & Ringrose

11 North Street

Bourne

Lincs

PE10 9AF

Hegarty LLP

48 Broadway

Peterborough

PE1 1YW

Auditors:

Whiting & Partners

108 High Street

Ramsey

Cambs

PE26 BS

Investment Advisors:

Whiting & Ptnrs Wealth Management Ltd

12/13 The Crescent

Wisbech

Cambs

PE13 1EH

Bankers:

HSBC

3 North Street

Bourne

Lincs

PE10 9AE

Investment Fund Managers:

Sarasin & Partners LLP

Juxon House

100 St Paul's Churchyard

London

EC4M 8BU

Quilter

St Helen's

1 Undershaft

London

EC3A 8BB

Integrated Financial Arrangements plc

Domain House

5-7 Singer Street

London

EC2A 4BQ



The Len Pick Trust

Structure, Governance & Management

The Charity operates under the terms of the Trust Deed registered with the Charity Commission on the 4th November 2004, as amended on the 9th August 2005.

Objects of the Trust

“For the general benefit of the inhabitants of Bourne Lincolnshire to further such charitable purposes as the Trustees in their absolute discretion shall think fit and in particular the Trustees shall make grants to local charitable organisations such as Bourne Abbey Church, Bourne Outdoor Swimming Pool, Bourne Darby & Joan Club, The Salvation Army and the Butterfield Day Centre”

Mission Statement

(Our aims)

To fulfil the aims of our benefactor for the general benefit of the townspeople of Bourne.
To provide full accountability and transparency for our actions in the management of the Trust.
To be pro-active in fulfilling our role as Trustees for the better management and expansion of the Trust.

Main Activity

(What we do)

We make general grants to charitable, voluntary and other organisations within the area of benefit. Although the Trust does not make grants directly to individuals, small hardship grants are made in conjunction with partnership agencies by means of a Small Grants Scheme described later in this report. The Trust at all times seeks particularly to maximise the impact of its endowment by assisting & partnering other voluntary organisations in the area of benefit.

Grant Making Policies and Procedures

(How we do it)

The Trust is empowered to make grants for general Charitable Purposes in accordance with the objects of the Trust. Grant application forms can be downloaded from the Trust's website. The Trustees are aware that the provision of full funding by the Trust could in some cases be counter productive and might lead to a situation whereby the very reason for the organisations existence and philosophy could be damaged. In such cases the case is discussed with the client and the Trustees may look for further evidence that other resource sources have been explored or that the organisation has used its existing funding on other elements of the related project. Exceptionally, full funding is provided where the Trustees are aware that total funding is required to enable the project to proceed for the general benefit of the inhabitants of Bourne. In all cases the amount of information required is proportionate to the amount of grant and size of organisation and does not exceed the information that an organisation is (or should be) providing to its Trustees or governing body. The Trust also seeks to be pro-active in its grant making procedures and will seek to interact with the applicant to better understand their requirements and offer advice in assisting them to attain their goals.

Recruitment & Induction of Trustees

(How we find and train our members)

Although the Trust Deed gives general powers to elect Trustees, the Foundation Trustees had particular regard for the need to enlarge the Board with members having a broad range of relevant skills and experience to enable and expand the work of the charity. It was also recognised that the regular recruitment of new Trustees would enable the Trust to better reflect best practice. All such vacancies are advertised in the local press and media and our own website. New Trustees are offered an induction programme to introduce and explain their role and the breadth of the charity's remit. This is based on an information pack which includes the Charity Commission Publication "*The Essential Trustee*", copies of management accounts, minutes of previous meetings, the governing document, administrative procedures and copies of adopted policies relating to such matters as Conflicts of Interests and Trustee's Code of Conduct.

An annual 'Trustee Training & Strategy Day' is held at the end of each financial year when the past year is reviewed and future strategy for the ensuing year is agreed. The opportunity is taken to combine these discussions together with formal training undertaken by a professional facilitator on previously identified issues. The Manager during the year regularly updates the trustees on matters such as new legislation and best practice as they impact on the work of the Trust.

All trustees give of their time freely. However in accordance with the express wishes of the late Mr Pick that he left in a letter to his executors, the trustees meet at his graveside annually in Bourne Cemetery on the 29th January when a short remembrance service is held. Subsequently and again in accordance with his wishes, the trustees and their partners are invited to attend an annual dinner where a toast is given in honour of his memory.

Risk Management

(Avoiding pitfalls)

The Trustees have established the major strategic, business and operational risks that the Charity is exposed to and these are regularly reviewed. The risks and controls thereon have been identified and measures have been taken to implement suitable monitoring procedures. To date these risks have mainly related to our investment portfolio, which have been ameliorated by a policy of diversification and regular monitoring. The Trustees have also emplaced policies for the regular monitoring of management accounts together with a quarterly internal audit procedure. A monitoring and evaluation procedure is also in place to ensure that a grant recipient complies with the terms and conditions attached to the award of a grant. The risk management process is regularly reviewed by the Finance and General Purpose Committee with appropriate recommendations made to the Full Trustee Board.

Investment Policy

(Making our assets work)

Although the Trustees have the power contained within the original trust deed to expend all or part of the capital, they consider that the endowment resulting from the residue of Mr Pick's estate should be regarded as capital and therefore have drawn up an investment policy which takes into account the requirement not only to produce income for present beneficiaries but also to protect the capital in real terms for the benefit of future beneficiaries over the economic cycle.

(Making our assets work, continued)

The Trustees have consequently sought to undertake a long term, low to medium risk investment policy involving a balanced portfolio with exposure to equities, bonds and alternative investments. Investment performance is measured against appropriate asset class benchmark returns, including indices for FTSE All Share, FTSE World excluding the UK, and FTSE All Stocks.

To further this policy of diversification, the investments of the trust are split between three investment managers, namely Quilter, Sarasin & Partners and Integrated Financial Arrangements Plc (Transact). The Trust is dependant almost wholly on the performance of its investment portfolio to undertake its charitable work and consequently regular monitoring is undertaken by the Finance & General Purposes Committee with the aid of our investment advisers, Messrs Whiting & Partners Wealth Management, who report to the regular monthly meetings of the committee. The Trustees also meet on a twice-yearly basis with the individual fund managers to review performance and allocations.

The Trustees have, with the agreement of the Charity Commission, adopted a Total Returns Policy. The object of this policy are to smooth cash flow variations and to ensure that income requirements do not dictate an investment policy which could lead to a narrow range of investments. In the light of continuing economic uncertainty and volatility, the trustees reaffirmed at the beginning of the year their policy of maintaining a conservative income draw down on this policy which is based on approximately 2% of the trust's investment values as at the 31st March 2009. The income deriving from this policy (2011/12 - £72,000), excluding bank interest and land rents) may however be supplemented by drawing from the established contingency reserve of £150,000 if required. The Trust's Investment Policy Statement and the rate of draw down on the Total Return Policy are reviewed annually.

Reserves Policy

(Planning for a rainy day)

The Trustees have established three reserves in order to manage the Trust's funds effectively. **Income Reserve**, this fund represents the surplus of income earned in any financial period less grants committed or running costs of the Trust, it is planned that the Trust's annual commitments should not normally exceed the amount earned for that financial period. **Capital Reserve**, this is the initial capital bequest by the late Mr Pick to establish the Trust, and although the Trust Deed contains provisions for the Trustees to expend the initial bequest it was decided at an early stage that in the interests of future beneficiaries this amount should be treated as "endowed capital". During the year the trustees have agreed to increase the capital reserve fund with the transfer of £100,000.00 from The Income & Expenditure Account in keeping with their wish to maintain the real value of the endowment over the economic cycle. **Contingency Reserve**, although it is planned that costs should not exceed annual income the Trustees recognise that short notice grants may be required and therefore this reserve has been established so that in this instance, any additional funding required will not be paid out of the Trust's capital reserves. This policy is reviewed annually. The contingency reserve is maintained at a figure of £150,000. The trustees have also resolved that in the expectation of continued likely reduced future income over the next few years this reserve will be utilised, if required, over that period to supplement our income stream.

Related Organisations

(Some of our partners and associates)

The Trust is a member of the Association of Charitable Foundations, an umbrella organisation for grant making charities. Partnership agreements are in place with South Kesteven Citizens Advice Bureau and the Bourne Corps of the Salvation Army in respect of the administration of the Small Grants Programme as explained later in this Report.

Conflicts Of Interest

(How we avoid them)

At an early stage the Trustees considered the management of Conflicts of Interest. Whilst the advice contained with the Charity Commission publication “A Guide to Conflicts of Interest for Charity Trustees” has been studied it was felt that the best practice requirement for the Trust to maintain a register of Trustees Interests was too invasive on individual Trustee’s privacy. It was also recognised that given the relatively small area of benefit of the Trust and the long association of the Trustees with the town of Bourne that individual conflicts of interest are likely to occur with most matters in some way, shape or form. Accordingly a policy has been adopted that requires each Trustee to give notice at the beginning of any meeting of any potential conflict. Such notice is recorded in the minutes of the meeting and the Trustee having given notice, takes no further part in the relevant discussion, save at the invitation of the Chairman when a Trustee who has special knowledge of a matter which is beneficial to the proper management of the Trust may speak. At no time does such a Trustee participate in voting on any such matter.

Trustee Training

(How we keep up to date)

The Trustees recognised at an early stage that in order for the legacy of Len Pick to be utilised to its best advantage, it would be necessary for a programme of continuing trustee development to be formulated. Upon induction, all Trustees receive a detailed briefing on their future role in ensuring that the Trust remains relevant to its beneficiaries. Ongoing training is undertaken in a number of ways including attendance at seminars organised by charity focused organisations, and circulation of relevant papers including Charity Commission publications and updates. Additionally, the annual Strategy Day is utilised as a focus for ongoing trustee development.

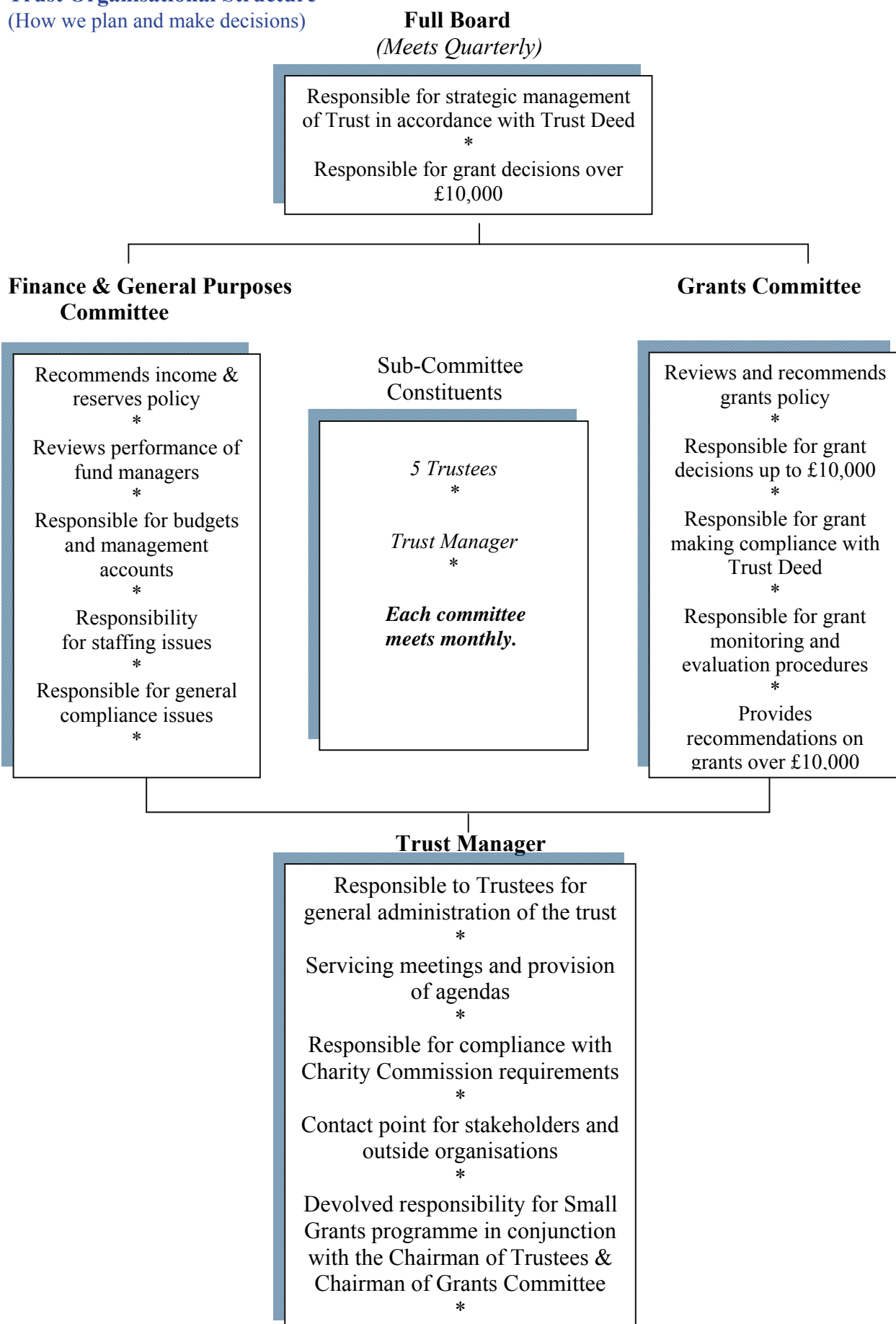
Brief History

(How it all started)

The Trust was created by the late Mr Len Pick, a retired local farmer and potato merchant, in February 1997, upon the proviso that registration with the Charity Commissioners was not undertaken until after his death in order that knowledge of his philanthropy would not come into the public domain during his lifetime. Mr Pick died on the 29th January 2004 and registration was achieved on the 4th November of that year. The Trust was launched publicly at an open meeting held in the Corn Exchange at Bourne in September 2005 where the intended policies of the Trust were unveiled to local charities and voluntary organisations.

Trust Organisational Structure

(How we plan and make decisions)



Chairman's Report

I write this report as my year as Chairman of the Trust draws to a close. The past twelve months seem to have just flown by! As a trustee of a grant-making charity founded for the general benefit of the townspeople of Bourne, I have had the opportunity of gaining a deeper insight into the complexities and many varied needs of our community but have also, unfortunately, seen the consequential effects of the changing political and economic landscape over the past months as it affects us here in Bourne. It is only too apparent that these changes are likely to continue for some considerable time resulting in the further reduction of service provision that we were previously able to take for granted.

We believe that Len Pick, when he formed the Trust, intended that it would assist in providing those 'extras' that were not provided through national or local government funding. The past few months have shown however that we cannot be deaf to the calls for assistance from proven groups whose on-going viability has, and is being, threatened by the sudden and unexpected reductions in funding availability. We have to be alive to changing circumstances and with only a relatively limited grant making capacity, we have to constantly re-evaluate and prioritise our grant making programmes to ensure the most effective usage of the trust's income. Our commitment of funds to assist the start-up of the Bourne Mental Health Group during the year and the assistance to Jean's Youth Café & the Butterfield Centre for their work is evidence of our commitment to ensuring that our funds are targeted strategically towards the greatest areas of need.

Of course, our grant making is dependent upon our ability to generate the necessary funding. Our Finance Committee and advisers have worked hard, as you will read elsewhere in this report, to ensure that we continue to avoid the worst excesses of the market volatility which have been experienced during the year. Sadly, this year, Phil Organ who has been a great asset to the committee's deliberations, resigned as a trustee as a result of a career move away from the area. Phil has not only been a tremendous help to us in safeguarding our finances but will also be missed in the wider community for his enthusiastic involvement in the Duke of Edinburgh Award Scheme with his wife Jesca and we wish them well in their new surroundings. In Phil's place, we are pleased to welcome Kevin Day who has lived in Bourne for most of his life and brings another skill set to our membership with his wide knowledge of environmental matters.

We have of course continued most of our established programmes to assist other organisations in their work. Earlier this year, I had the pleasure of accompanying Tessa Sanderson CBE & Steve Williams, our guest speakers at our Annual Memorial Evening, to visit all the local schools earlier that day when over 1,000 children were able to listen to the story of Tessa's endeavour & success and also learn something of the Olympics and its ideals. The feedback from the schools was very positive and Tessa's comment on Twitter after her visit "*Had a fantastic day visiting Bourne today. Fab people, great schools and songs were brilliant, big ta*", really says it all.

As you read through this report, I do hope that you will be able to see some of the benefit that Len Pick bestowed on the town, where he was born and lived his life, which has enabled his Trust to provide support and assistance to many causes. Of course, it would be remiss of me not to thank my fellow trustees for their efforts in ensuring that the Trust does what it says on the tin! But, I conclude by also expressing my thanks to all the myriad volunteers who help to make our community what it is today. My message to them is that we are here, as Len wished, to assist them, as and when required, in their work for the general benefit of the townspeople of Bourne.

Andy Rowe - Chairman of the Trustees 2011-12

Achievements & Performance

(What we have done in detail)

Category	Grants Allocated & Paid in 2011/12	Grants Allocated in Previous Years & Paid 2011/12	Total
	£	£	£
A1: Relief of Poverty	2,910.58		2,910.58
A2: Small Grants Scheme	2,000.94		2,000.94
B1: Mental Health & Disability	4,300.00		4,300.00
B2: Physical Welfare			
B3: Social & Medical Welfare	6,500.00		6,500.00
C2: Sport	7,250.00		7,250.00
C4: Music & The Arts			
D1: Welfare of the Elderly	2,750	250.00	3,000.00
D2: Youth/Young People	6,485.00	250.00	6,735.00
E1: Education	4,762.00		4,762.00
F1: Community	6,390.32	124.75	6,515.07
F2: Len Pick Memorial Lecture	10,817.70		10,817.70
G1: Religion			
H1: Other/General	543.18		543.18
Total(s)	£54,709.72	£624.75	£55,334.47

A more detailed commentary of Grant expenditure for the year to the 31st March 2012 is set out below.

Schools Grant Scheme	£ 2,910.58
Small Grants Scheme	£ 2,000.94
Toolbar	£ 1,000.00
Bourne Red Cross Detachment	£ 6,000.00
The Willoughby School	£ 1,000.00
Bourne Wellbeing Group	£ 4,300.00
Bourne Police Cadets	£ 1,000.00
Bourne Sports Club	£ 7,000.00
1 st Bourne Guides	£ 485.00
Citizens Advice Bureau	£ 43.18
Bourne Sci-Fest	£ 3,762.00
Lincs Rural Support Group	£ 500.00
The Butterfield Centre	£ 3,000.00
Bourne Civic Society	£ 91.47
Bourne BRM Day Committee	£ 5,000.00
Schools Sports Presentation Cups	£ 250.00
Diamond Jubilee Tree Planting	£ 423.60
Salvation Army/Jeans Youth Worker	£ 4,000.00
Prison Me No Way	£ 1,250.00
Len Pick Memorial Day	£10,817.70
Toolbar Designated Fund	£ 500.00
Total	£55,334.47

Note: The figure shown in the statement of financial activities (Page 22) of £63,459.72 for Direct Charitable purposes is adjusted in accordance with accounting conventions to reflect unspent previously allocated grant provisions (£125.25) and also future allocated grant programmes (£8,000.00).

Our grant making activities in more detail

A1 Relief of Poverty - Schools Grant Scheme

This scheme is designed to give assistance to children of school age who, for reasons of limited finance, may be disadvantaged, for example, in attendance on school trips, provision of uniform or equipment needs. The grant is spent absolutely at the discretion of the Head Teacher, with one other member of staff, for the purpose of addressing such issues. The amount of grant is based on a formula based on the school role and related to established need requirements data. During the year £2,910.58 was devoted to this scheme in respect of the two local primary schools and the Robert Manning College. As in previous years, the balance of the year's allocation to this scheme (£1,000.00) was paid under Category E1 (Education), to the Willoughby School for help with additional equipment to benefit all pupils.

A2 Small Hardship Grants Scheme

Although the Trust does not give grants to individuals, we are aware of severe cases of need, within our area of benefit, where assistance is not available from statutory sources. The Trust's maximum grant is up to £250 (Two hundred and fifty pounds); this amount is discretionary and not automatic. **We do not make out cheques to individuals.** Applications are submitted by approved partnership agencies with appropriate recommendations and then evaluated by the trust manager acting in conjunction with the chairman of the grants committee. The cheque is made out to the agency or directly to a nominated supplier where appropriate. During the financial year we made 11 grants totalling £2,000.94 out of the previously agreed allocation. In the light of continuing adverse economic conditions we have made provision for the continuation of this scheme in 2012/13 with a further allocation of £5,000.

B1: Mental Health

During the year assistance totalling £4,300 was given to Bourne Mental Health & Wellbeing Group. The group was formed by, and for the benefit of local users following the demise of the 'Lincolnshire Mind' outreach group in Bourne as a result of reduction in funding countywide. Subsequent to our initial grant of £3,300, the club was sadly the victim of misappropriation of funds. Resulting from this loss which threatened the on-going viability of the group the trustees resolved to offer further assistance to ensure its continuance by agreeing to be responsible for six months' rental payments in respect of their meeting rooms at Wake House totalling a further £3,000. This resulted in payments to the year-end amounting to £1,000 with the balance of £2,000 to be paid during 2012/13. We are pleased to say that the group now attracts some 20-30 users a week and provides a valuable benefit to users in the local community. We are grateful to the assistance offered by both The Bourne Arts and Community Trust and also South Lincolnshire Community Voluntary Service in assisting the group.

B2: Physical Disability

During the year no grants were made under this category.

B3 Social & Medical Welfare



A grant of £6,000 assisted the Bourne Detachment of The Red Cross in the purchase of a brand new specialist emergency response vehicle to complement the ambulance which the Trust provided in 2007. The new vehicle has already proved its worth by being in service at local events and is pictured here at Burghley Park Stamford on the occasion of the visit of Her Majesty the Queen in June of this year.

A grant of £500 paid to Lincolnshire Rural Support Network assisted the provision of a part time case worker for South Lincolnshire. The Rural Support Network is a countywide initiative to provide counselling services to the rural community and provides pastoral and practical support to farming and rural people during periods of anxiety, stress and problems relating to their families and businesses.

C2: Sport

The Trustees continue to regard sport for all ages as an important tool for promoting community and healthy living benefits. Two grants totalling £7,250 were made during the year. A grant of £7,000.00 assisted with the refurbishment of the Kitchen Facilities at Bourne Sports Club facilities at Milking Nook Drove. The club is the home of both Bourne Town Rugby Club and Bourne Town Junior Football Club and caters for over 500 junior and senior members and provides an important, voluntary, sports facility.



Brian Ruben of Bourne Rugby Club with trustees Geoff Hyde and Kay Henderson



Maisie Mae Spriggs, the first winner of the Bourne Westfield Academy Cup.

Following the successful visit to the local schools by Olympic athlete Tessa Sanderson, prior to her talk at the Len Pick Memorial Evening, the trust donated presentation cups to the local schools to commemorate her visit and the Olympic year. The cups will be awarded by the schools each year at the discretion of the head teachers to the pupils making a significant contribution to achievement in their respective schools. Pictured here is

C4: Music & the Arts

During the year no grants were made in this category.

D1: Welfare of the Elderly

A grant of £3,000 enabled the trustees of The Butterfield Centre to upgrade kitchen and toilet facilities at the centre. The centre provides day care facilities for many clients and also provides 'Wheels on Meals' service throughout the area of benefit.

D2: Youth/Young People

Obviously, our work with Youth is reflected not only in this category, but also in our work under the Education and Sports Categories detailed elsewhere in this report. Youth & Young People continue to be one of the main focuses of the Trust.

A grant of £485 to Bourne Guides enabled the purchase of replacement tables for their headquarters at the Shippon Barn. The facility is well used by both the Guides and Scouts. During the year we



were also pleased to attend a presentation on the trip of a group of Bourne Scouts who attended the World Jamboree in Sweden in 2011, the cost of which had been contributed to by the Trust.

A grant of £1,250 once again enabled a presentation to The Robert Manning College by The No Way Trust, a national educational charity set up in 1995 by prison officers who wanted to make an impact on the lives of young people and turn them away from crime and its consequences using highly innovative educational techniques.

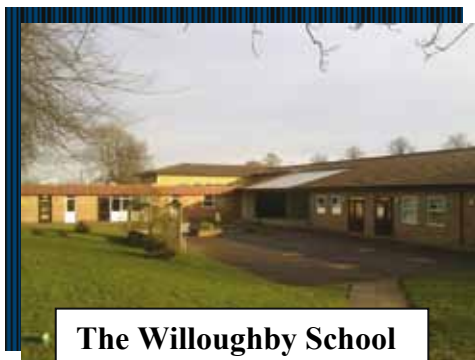
The Trust provides a quality service to help young people make a success of their lives, using an innovative, fresh approach that encourages a positive decision making process, designed to reduce or remove the possibility of offending behaviour.

For once, the Bourne Police Cadets Annual Summer Camp in the Peak District took place in unusually hospitable weather. Normally the cadets face the worst possible weather conditions! We were pleased to provide a grant of £1,000 to assist with Youth Hostel accommodation for the party for their camp.



Finally a grant of £4,000, shared between Jeans Youth Café and The Salvation Army, helped to provide a shared part time youth leader to assist both organisations.

E1: Education



As mentioned earlier, as part of our programme for assistance to local schools, we assist annually The Willoughby School with a grant £1,000.00 to purchase equipment which cannot be funded out of the School's budget allocation. The school has a high reputation for its work with special needs children and is a very significant community asset.

Following the success of the Sci-Fest event in previous years, we were pleased to be able to provide a grant of £3,000.00 towards the costs of this year's Sci-Fest. This popular bi-annual event is provided by a volunteer committee in conjunction with the local schools and this year saw some 4,000 children & adults participate in this programme of science based lectures and exploration. Additionally, we were able to provide, through the generosity of the Bourne Slimming World Group, a further sum of £762.00 towards this project. This money being the proceeds of a sponsored slim which the Group had undertaken to raise funds for the Trust.

The completion of the new classroom block at Bourne Abbey Church of England Primary Academy enabled the completion of the new resource centre the provision of which the trust had helped to facilitate by providing £15,000 towards the fitting out costs. Our chairman, Andy Rowe, was delighted to be invited by the

governors
to
officially
open the

new centre in February which is named in honour of our benefactor. With the opening of this centre, the Trust has now helped to facilitate Resource Centres at the two primary schools in the town and also the Bourne Academy.



F1: Community



We have continued our support for Toolbar which is a local voluntary initiative which aims to offer support and friendship to people who have recently become unemployed by assisting in the preparation of CV's and interview skills, thus providing opportunities to research job vacancies and opportunities. We have again been pleased to support their work during the year with the provision of a grant of £1,000.00.

F1: Community (Continued)

The payment of previously agreed grants totalling £691.47 to Bourne Civic Society facilitated the publication and launch of a booklet detailing the life and achievements of Charles Worth, the world famous Paris couturier who spent his childhood in Bourne. The Trust had previously assisted the Society in the assembly and display of the Worth Exhibition at Baldock's Mill and the book details the life and times of Charles Worth.



Grant Committee Chairman, Gerry Burrows, pictured with members of Bourne Civic Society at the Worth book launch.

2012 sees the 50th anniversary of the Bourne based BRM team bringing home, both the World Formula One Grand Prix Championship and the Driver's Championship. To celebrate this anniversary, a volunteer committee are organising a major event in the town to be held in early October which is expected to bring in many thousands of visitors. The event has a number of aims including celebrating an important part of our heritage, raising town pride and awareness together with raising funds for Bourne Outdoor Swimming Pool and The Lincolnshire Air Ambulance. The Trust was pleased to donate £5,000 to enable organisation of this major event to proceed.

We were also very pleased to receive an anonymous donation from a local couple with the request that the donation was spent on an environmental improvement in our area of benefit. With their agreement, we therefore decided that we would plant 38 mixed Lime and Cherry Trees alongside Mill Drove on farmland owned by the trust in honour of the Diamond Jubilee. The trees are thriving and we expect that in future years they will make an attractive vista along this entrance to the town.

F2: The Len Pick Memorial Evening.

As the 2012 event would coincide with the build-up to the London 2012 Olympics, the Trustees decided to widen the scope of the event this year to incorporate presentations to all the local schools as well as the Memorial Evening. Our guest speakers were Tessa Sanderson CBE and Steve Miller and they very generously and enthusiastically embraced our vision and entered into this marathon day. Tessa is a six times Olympian and won, during her appearances, three gold medals. Steve Miller is the head of the London Boroughs Regulatory Authority for the Olympic site.



(Above) Young Olympians from Bourne Abbey Academy

Both Tessa and he embarked on a marathon of presentations to all the Bourne Schools during the day. Tessa spoke on her experiences and how the Olympic experience had changed her life, whilst Steve concentrated on the history of the London Games and explained how the venue was once the most contaminated site in Europe and how the work of remediation and construction has been undertaken.

F2: The Len Pick Memorial Evening (continued)

Following the day's presentation they both took centre stage at The Corn Exchange in the evening and enthralled the capacity audience with their stories. We were very pleased with the success of the day's events and are most grateful for Steve and Tessa's co-operation with the event. The total cost of the day's events amounted to £10,817.



**Bourne Westfield Academy
Presentation**

G1: Religion

During the year no grants were made under this category.

H1: Other General

A grant of £43.18 facilitated a software upgrade for the Citizens Advice Bureau computer systems for their Wake House Thursday sessions.

What we have achieved during the year

The total amount of grant funding agreed and paid during the year amounting to £55,334.47 represents an increase from the previous year (£37,029.17). This is reflective of the number of completed major grant applications received, compared with the previous year's applications. During the year one grant application was deferred pending further information, compared to two in 2010/11. Of course, grant payments do not represent the totality of the work of the Trust during the year. The extension to the Salvation Army Impact Centre has taken longer to complete than originally anticipated, due to production difficulties, we anticipate however that the building will be used from July onwards of this year and we look forward to the official opening in September and are grateful for all the work and effort which has gone into the project.

As will have been noted above, a pleasing feature that we have noted during the year has been the increase in voluntary income from outside parties who recognise the benefit of our work and wish to assist with our aims. Evidence of this was the receipt of donations to help the Toolbar volunteers in their work.

Of course, some of the trustee's work must remain unsung for reasons of confidentiality. A considerable amount of time has been expended by them on outreach to other organisations within the town in helping with the provision of advice and listening to requirements and facilitating projects.

Financial review of the year

(How our assets have performed during the year)

Despite a background of continuing economic uncertainty and volatility, our investment portfolio performance during the year has been surprisingly resilient. Excluding cash deposits, land and income drawdown, the value of the portfolio decreased from £4,392,343 by £3,789 to £4,388,554, a percentage decrease of slightly less than 0.1%.

The investment performance was assisted to some degree by the decision to continue to restrict our income from the total return policy to approximately 2% of the value of the portfolio at the beginning of the 2009. Together with income from land rents, the actual income produced by our investments amounted to a total income of £116,677 against the previous year's income of £110,709. Of the actual income figure of £110,709, our draw down on our total return policy amounted to some £72,000, with the balance utilised to bolster our capital reserves in line with our wish to maintain the capital of the trust in real terms. Gross expenditure during the year amounted to £106,462.00, of which £63,460 was spent on direct charitable expenditure (2010/11-£36,884) and the remaining £42,502 (2010/11-£44,250) on management & governance costs.

In the light of continuing economic uncertainty and volatility and also in compliance with our aim to maintain the value of the capital in real terms over the economic cycle, we have taken the opportunity to transfer a further sum of £100,000 from the Income & Expenditure Account to the Capital Account.

We are currently reviewing the overall asset allocations of the portfolio and anticipate that this work will be concluded in the late summer of 2012 with a possible move to a slightly less defensive portfolio than has hitherto been employed.

Meeting our objectives

(Have we or haven't we?)

In a Charity such as ours, it is really impossible to apply any really meaningful means of measuring our success (or indeed failure) in meeting our objectives. Obviously our objective remains, as Len Pick decreed when he founded the Trust, *"For the General Benefit of the townspeople of Bourne Lincolnshire"*. We believe that the objectives that we set ourselves at the outset of the year have been largely fulfilled through our grant making programme and our outreach to local organisations detailed above. However, we are not complacent, the work of the trust is on-going and we must be aware of the continually evolving pressures on society and be in a position to assist. We also have to be aware that the Trust is in perpetuity and in order that it remains meaningful for the long term, we have to be aware of the insidious effects of inflation and adverse economic performance on our endowment. Balancing these two requirements successfully to provide growth and meet need requires something of a juggling act and continues to be our biggest challenge.

Future Plans

(What we intend to do in the future)

In respect of our grant making programme we will continue to implement the recommendations of The Needs Survey that we commissioned in 2008. Our key priorities can again be summarised thus:

- To continue to work with other organisations and the Schools to reach out to and benefit the Town's young people.
- To continue to co-operate and liaise with statutory and voluntary sector providers, so that by these means, the benefit of Mr Pick's legacy can be maximised for the benefit of all.
- We will also continue our aim of providing assistance to voluntary organisations to assist with the maintenance of their premises.
- To assist, where possible, organisations affected by changes in public funding

Public Benefit Statement

(Are we providing a public benefit?)

The Trustees confirm that they have complied with the duty contained within the Charities Act 2011 to have due regard to the Charity Commission's general guidance on public benefit. The Trust's charitable purpose is enshrined in its objects, "*For the general benefit of the inhabitants of Bourne Lincolnshire*". The Trustees consider that the aims of our late benefactor are fulfilled, not only by means of the trust's grant making policies, but also by their efforts in partnering and assisting the work of local voluntary bodies to enhance their effectiveness in bringing a significant benefit to the lives of the inhabitants of Bourne.

Adrian Smith FRICS
Trust Manager

Statement of Trustees Responsibilities

(What we have to do)

The Trustees are responsible for preparing the financial statements in accordance with applicable law and United Kingdom Generally Accepted Accounting Practice. Charity law requires the Trustees to prepare financial statements for each financial year, which give a true and fair view of the state of affairs of the charity and of the surplus or deficiency of the charity for that year.

In preparing these financial statements, the Trustees are required to select suitable accounting policies as described on page 24 and then apply them on a consistent basis, making judgements and estimates that are prudent and reasonable. They must also prepare the financial statements on a going concern basis unless it is inappropriate to presume that the Trust will continue in business.

The Trustees are responsible for keeping proper accounting records that disclose with reasonable accuracy at any time the financial position of the Trust and to enable them to ensure that the financial statements comply with the Charities Act 2011. The trustees are also responsible for safeguarding the assets of the Trust and hence for taking reasonable steps for the prevention and detection of fraud and other irregularities.

In so far as the Trustees are aware:

- there is no relevant audit information of which the Trust auditors are unaware; and
- the Trustees have taken all steps that they ought to have taken to make themselves aware of any relevant audit information and to establish that the auditors are aware of that information.

Signed on behalf of the Trustees

R Patel

Chairman

C J Houseago

Vice-Chairman

Dated: 25th June 2012

The accounts have been prepared in accordance with the accounting policies set out in Note 1 to the accounts and comply with the Charity's Trust Deed, applicable law and the requirements of the Statement of Recommended Practice "Charity Reporting & Accounting" issued in March 2005 (Revised May 2007).

Independent Auditors' Report to the Trustees of The Len Pick Trust

We have audited the financial statements of the Len Pick Trust for the year ended 31 March 2012 which comprise the Statement of Financial Activities, the Balance Sheet, and related notes. These financial statements have been prepared in accordance with the accounting policies set out on page 24.

This report is made solely to the Charity Trustees, as a body, in accordance with Section 144 of the Charities Act 2011. Our audit work has been undertaken so that we might state to the Trustees those matters we are required to state to them in an auditor's report and for no other purpose. To the fullest extent permitted by law, we do not accept or assume responsibility to anyone other than the Charity and its Trustees as a body, for our audit work, for this report, or for the opinions we have formed.

Respective Responsibilities of Trustees and Auditors

The responsibilities of the trustees for preparing the Trustees' Report and the financial statements in accordance with applicable law and United Kingdom Accounting Standards (United Kingdom Generally Accepted Accounting Practice) are set out in the Statement of Trustees' Responsibilities on page 19.

We have been appointed as auditors under section 144 of the Charities Act 2011 and report in accordance with regulations made under section 154 of that Act. Our responsibility is to audit the financial statements in accordance with relevant legal and regulatory requirements and International Standards on auditing (UK and Ireland).

We report to you our opinion as to whether the financial statements give a true and fair view and are properly prepared in accordance with the Charities Act 2011. We also report to you if, in our opinion, the Trustees' Annual Report is not consistent with the financial statements, if the charity has not kept proper accounting records or if we have not received all the information and explanations we require for our audit, or if information specified by law regarding Trustees remuneration and transactions with the Charity is not disclosed.

We read other information contained in the Trustees' Annual Report, and consider whether it is consistent with the audited financial statements. We consider the implications for our report if we become aware of any apparent misstatements or material inconsistencies with the financial statements. Our responsibilities do not extend to any other information.

Basis of Opinion

We conducted our audit in accordance with International Standards on Auditing (UK and Ireland) issued by the Auditing Practices Board.

An audit includes examination, on a test basis, of evidence relevant to the amounts and disclosures in the financial statements. It also includes an assessment of the significant estimates and judgements made by the trustees in the preparation of the financial statements, and of whether the accounting policies are appropriate to the charity's circumstances, consistently applied and adequately disclosed.

We planned and performed our audit so as to obtain all the information and explanations we considered necessary in order to provide us with sufficient evidence to give reasonable assurance that the financial statements are free from material misstatement, whether caused by fraud or other irregularity or error. In forming our opinion we also evaluated the overall adequacy of the presentation of information in the financial statements.

**Independent Auditors' Report to the Trustees of
The Len Pick Trust (Continued)**

Opinion

In our opinion the financial statements:

give a true and fair view of the state of the Charity's affairs as at 31 March 2012 and of its incoming and resources and application of resources, including its income and expenditure, for the year then ended;

have been properly prepared in accordance with United Kingdom Generally Accepted Accounting Practice; and

have been properly prepared in accordance with the Charities Act 2011.

Matters on which we are required to report by exception

We have nothing to report in respect of the following matters where the Charities Act 2011 requires us to report to you if, in our opinion:

the information given in the Trustee's report is inconsistent in any material respect with the financial statements; or

sufficient accounting records have not been kept; or

the financial statements are not in agreement with the accounting records and returns; or

we have not received all the information and explanations we require for our audit.

Whiting & Partners

**Whiting & Partners
Chartered Accountants & Business Advisors
Registered Auditors
108 High Street
Ramsey
PE26 1BS**

Date:

The Len Pick Trust
Statement of Financial Activities
For the Year ended 31 March 2012

	Note	Unrestricted Funds £	Restricted Funds £	Endowment Funds £	Total 2012 £	Total 2011 £
Incoming Resources before Transfers & Revaluations:-						
Incoming Resources from generated funds:						
Voluntary Income		1,327	700	0	2,027	250
Income from investments	2	116,677	0	0	116,677	110,709
Total incoming resources		<u>118,004</u>	<u>700</u>	<u>0</u>	<u>118,704</u>	<u>110,959</u>
Resources Expended:						
Costs of generating funds:						
Investment Management Costs	3	10,500	0	0	10,500	11,000
Direct charitable purposes	4	63,460	500	0	63,960	36,884
Governance Costs	5	32,002	0	0	32,002	33,250
Total Resources Expended	6	<u>105,962</u>	<u>500</u>	<u>0</u>	<u>106,462</u>	<u>81,134</u>
Net (outgoing)/incoming resources before revaluation & investment asset disposals		12,042	200	0	12,242	29,825
Transfers between Funds		-100,000	0	100,000	0	0
Realised gains/(losses) on disposal of investment assets	7	-5,640	0	0	-5,640	11,946
Unrealised gains/(losses) on revaluation of investment assets	14	-22,635	0	0	-22,635	232,120
Net Movement in Funds		<u>-116,233</u>	<u>200</u>	<u>100,000</u>	<u>-16,033</u>	<u>273,891</u>
Fund Balances brought forward		429,285	0	4,478,953	4,908,238	4,634,347
Fund Balances carried forward		<u>313,052</u>	<u>200</u>	<u>4,578,953</u>	<u>4,892,205</u>	<u>4,908,238</u>

The charity has no recognised gains or losses other than the results for the year as set out above.

All of the activities of the charity are classed as continuing.

The notes on pages 24 to 29 form part of these accounts.

The Len Pick Trust
Balance Sheet
As at 31 March 2012

		2012		2011	
	Note	£	£	£	£
Fixed Assets					
Tangible Fixed Assets	8	1,017		1,355	
Investment Property	9	140,000		140,000	
Listed Investments	10	4,388,554		4,392,343	
Cash Balance held in Investment Portfolio	10	<u>146,987</u>		<u>179,137</u>	
			4,676,558		4,712,835
Current Assets					
Sundry Debtors	11	25,529		30,729	
Cash at Bank:					
Current Account		15,667		8,440	
Deposit Account		<u>197,001</u>		<u>170,039</u>	
		<u>238,197</u>		<u>209,208</u>	
Current Liabilities					
Creditors falling due within one year	12	<u>-22,550</u>		<u>-13,805</u>	
Net Current Assets			<u>215,647</u>		<u>195,403</u>
Total Assets Less Current Liabilities			4,892,205		4,908,238
Creditors: Amounts falling due after more than one year	13		0		0
Net Assets			<u><u>4,892,205</u></u>		<u><u>4,908,238</u></u>
Represented By:					
Unrestricted Funds	14				
Income and Expenditure Account		163,052		279,285	
Contingency Fund	15	150,000		150,000	
Endowment Funds					
Capital Fund	16	<u>4,578,953</u>		<u>4,478,953</u>	
			4,892,005		4,908,238
Restricted Funds					
Toolbar Account	17		200		0
			<u><u>4,892,205</u></u>		<u><u>4,908,238</u></u>

Approved by the Trustees on:

R Patel
.....Trustee

C J Houseago
.....Trustee

The notes on pages 24 to 29 form part of these accounts.

The Len Pick Trust
Notes to the Accounts
For the Year Ended 31 March 2012

1 Accounting policies

a) Accounting Convention

The accounts have been prepared under the historical cost convention, and in accordance with the Charities Act 2011 and the Statement of Recommended Practice: Accounting and Reporting by Charities issued in March 2005.

b) Incoming Resources

Voluntary Income is from donations and is recognised on a receipts basis.
Income from investments is included when receivable.

c) Fund Accounting

Unrestricted funds are available for use at the discretion of the trustees in furtherance of the general objectives of the charity.

The Capital fund represents the balance received from the Estate of the late Mr. T.L. Pick and it is the intention of the Trustees that this balance should be maintained to provide suitable levels of investment income to meet the Trusts charitable obligations.

The contingency fund has been established as it is the intention of the Trustees that grants paid in any accounting period should not exceed income received, this fund exists that in a situation where an additional grant is required in excess of the years income, it can be paid without drawing on the Trust's capital fund.

d) Resources Expended

Expenditure is recognised on an accruals basis as a liability is incurred. Expenditure includes any VAT which cannot be fully recovered, and is reported as part of the expenditure to which it relates:

Costs of generating funds comprise the costs of both attracting voluntary income and the costs associated with its permitted trading activities of letting properties.

Charitable expenditure comprises those costs incurred by the charity in the delivery of its activities and services for its beneficiaries.

Grants payable are included on an accruals basis, where the grant is due to be paid to the benefactor once the qualifying conditions have been met. There is a right to recover grants given and not utilised in accordance with the agreed terms, and any recoveries will be included in the accounts when recovered.

Governance costs include those costs associated with meeting the constitutional and statutory requirements of the charity, as well as administrative and establishment costs of the charity which cannot be fairly allocated to any of the charity's activities.

e) Fixed Assets

Depreciation is calculated so as to write off the cost of an asset, less its estimated residual value, over the useful economic life of that asset as follows:-

Office Equipment, including development of website - 25% Reducing Balance

The Len Pick Trust
Notes to the Accounts (Continued)
For the Year ended 31 March 2012

1 Accounting policies (Continued)

f) Investments

The Trust adopts a Total Returns Policy of a sum of 2% of the capital fund, which is based upon a sum equivalent to the fund value as at 31 March 2009. This policy is adopted due to current economic conditions and the low investment returns currently being received. This policy is reviewed annually.

In accordance with the Charity SORP 2005 investments are stated in these accounts at their current market value.

g) Changes in Accounting Policies

Apart from the change in investment policy noted above all policies are consistent with the previous period, all are reviewed annually to ensure they are appropriate to the Trust's current circumstances.

2 Interest Receivable and Similar Income

	Unrestricted Funds	Year to 31.3.2012 £	Year to 31.3.2011 £
Rents from Investment Property	3,114	3,114	2,951
Income from Listed Investments	108,914	108,914	103,293
Interest receivable	4,649	4,649	4,465
	<u>116,677</u>	<u>116,677</u>	<u>110,709</u>

3 Costs of Activities for Generating Funds

	Unrestricted Funds £	Total Funds Year to 31.3.2012 £	Total Funds Year to 31.3.2011 £
Professional Fees - Investment Advice	10,500	10,500	11,000

4 Direct Charitable Expenditure

	Unrestricted Funds £	Restricted Funds £	Total Funds Year to 31.3.2012 £	Total Funds Year to 31.3.2011 £
Grants Payable	52,642	500	53,142	33,158
Charitable Events	10,818	0	10,818	3,726
	<u>63,460</u>	<u>500</u>	<u>63,960</u>	<u>36,884</u>

The Len Pick Trust
Notes to the Account (Continued)
For the Year ended 31 March 2012

5 Governance Costs

	Unrestricted Funds £	Total Funds Year to 31.3.2012 £	Total Funds Year to 31.3.2011 £
Insurance	1,140	1,140	1,129
Sundries	1,994	1,994	4,435
Depreciation & Loss on Disposal	338	338	793
Management Charges	25,200	25,200	23,625
Auditors' Remuneration	3,330	3,330	3,268
	32,002	32,002	33,250

6 Total Expenditure

	Note	Depreciation & Loss on Disposal £	Other Costs £	Total Funds Year to 31.3.2012 £	Total Funds Year to 31.3.2011 £
Total Resources Expended					
Costs of Generating Funds	3	-	10,500	10,500	11,000
Direct Charitable Expenditure	4	-	63,960	63,960	36,884
Administrative Expenditure	5	338	31,664	32,002	33,250
		338	106,124	106,462	81,134

7 Realised (Losses)/Gains on Disposal of Investment Assets

	Unrestricted Funds £	Total Funds Year to 31.3.2012 £	Total Funds Year to 31.3.2011 £
(Loss)/Profit on Disposal of Listed Investments	-5,640	-5,640	11,946
	-5,640	-5,640	11,946

The Len Pick Trust
Notes to the Accounts (Continued)
For the Year ended 31 March 2012

8 Tangible Fixed Assets

	Office Equipment £	Total £
Cost		
At 1 April 2011	4,662	4,662
At 31 March 2012	<u>4,662</u>	<u>4,662</u>
Depreciation		
At 1 April 2011	3,307	3,307
Charges for the period	338	338
At 31 March 2012	<u>3,645</u>	<u>3,645</u>
Net Book Value At 31 March 2012	<u>1,017</u>	<u>1,017</u>
At 31 March 2011	<u>1,355</u>	<u>1,355</u>

9 Investment Property

	2012 £
Market Value	
At 1 April 2011	140,000
At 31 March 2012	<u>140,000</u>

10 Listed Investments

	Cost or Mkt Value at 1.4.11 £	Cash Balances at 1.4.11 £	Additions/ (Withdrawals)	2012 Realised Gains/ (Losses) £	Unrealised Gains/ (Losses) £	Cost or Mkt Value at 31.3.12 £	Cash Balances at 31.3.12 £
Quilter Portfolio	1,235,907	19,318	11,205	-5,640	-1,630	1,229,122	30,038
COIF Charities Deposit Fund	-	80,000	-50,000			-	30,000
Sarasin	1,815,119	17,441	37,866		-80,756	1,758,364	31,306
Transact	1,341,317	62,378	-6,735		59,751	1,401,068	55,643
	<u>4,392,343</u>	<u>179,137</u>	<u>-7,664</u>	<u>-5,640</u>	<u>-22,635</u>	<u>4,388,554</u>	<u>146,987</u>

The Len Pick Trust
Notes to the Accounts (Continued)
For the Year ended 31 March 2012

11 Sundry Debtors

	2012	2011
	£	£
Investment Income	25,529	30,729
	<u>25,529</u>	<u>30,729</u>

12 Creditors

	2012	2011
	£	£
Grants Payable	19,250	10,625
Sundry Creditors	3,300	3,180
	<u>22,550</u>	<u>13,805</u>

13 Creditors Falling Due After 12 Months

	2012	2011
	£	£
Grants Payable	-	-

The trustees have accrued as a liability grants payable, where the qualifying conditions have been met at the balance sheet date, and the grant has been approved for payment by the trustees. The total Grants payable are £19,250 (2011 £10,625) as shown above and in Note 12 to these accounts.

14 Net Assets Between Funds

Fund Balances at 31 March 2012 are represented by:-

	Total	Unrestricted Funds	Restricted Funds
	£	£	£
Fixed Assets	4,676,558	4,676,558	-
Cash at Bank and In Hand	212,668	212,468	200
Sundry Debtors	25,529	25,529	-
Sundry Creditors	-22,550	-22,550	-
	<u>4,892,205</u>	<u>4,892,005</u>	<u>200</u>
Unrealised Gains included in above Fixed Asset Investments	11,454	11,454	-
Reconciliation of Movement in Unrealised Gains on Investments			
Unrealised Gain at 1 April 2011	34,089	34,089	-
(Decrease) in Reserve for the year	-22,635	-22,635	-
UNREALISED GAIN AT 31 MARCH 2012	<u>11,454</u>	<u>11,454</u>	<u>-</u>

The Len Pick Trust
Notes to the Accounts (Continued)
For the Year ended 31 March 2012

15 Contingency Fund

The Trustees have maintained the Contingency Fund at £150,000 in the expectation of this amount being used to fund any additional requirements for grant aid during the ensuing year.

16 Capital Fund

	2012 £
Opening Reserves at 1 April 2011	4,478,953
Transfer from Income and Expenditure Account	100,000
Closing Reserves at 31 March 2012	<u><u>4,578,953</u></u>

17 Restricted Reserves

Toolbar

Donations Received	700
Grants Made	500
Closing Reserves at 31 March 2012	<u><u>200</u></u>

18 Transactions with Trustees

During the year no remuneration was paid to any Trustee. Trustees were reimbursed out of pocket expenses totalling £0.

The Len Pick Trust is now well established and has long-term aims for the general benefit of the townspeople of Bourne Lincolnshire in accordance with our benefactor's wishes. Whilst we are one of the leading local charities, we know that with greater resources, we could achieve our objectives much more fully in our area of benefit. If you feel that you would like to make a contribution to our work and add to the endowment of Len Pick, whether through donation, gift aid or a legacy, we would be most grateful if you would contact Adrian Smith, the Trust Manager, at PO Box 92, Bourne. PE10 1AD Tel: (01778) 424159

NOTES

NOTES

The Len Pick Trust

A Registered Charity for the benefit of the townspeople of Bourne

Those that we helped so far include:

Alternatives Advice Centre
Bourne Abbey Primary School
Bourne Army Cadet Force
Bourne Badminton Club
Bourne Cricket Club
Bourne Darby & Joan Club
Bourne & District Guides
Bourne Grammar School
Bourne Netball Club
Bourne Outdoor Pool
Bourne Sports Club
Bourne Westfield School
Bourne Tennis Club
Bourne Town Juniors Football Club
Bourne Wheelers
Citizen's Advice Bureau
Home Start SW Lincs
The Butterfield Centre
The Evergreen Care Trust
Robert Manning College
The Salvation Army Bourne Corps

CAN WE HELP YOU?

The Len Pick Trust provides financial support to a wide variety of projects and initiatives that help improve the quality of life in our town. We are always looking for organisations and projects to apply for funding to join those who have already benefited from the legacy of Len Pick.

APPLY FOR FUNDING

Contact the Len Pick Trust manager, Adrian Smith at the address below or at enquiries@lenpicktrust.org.uk or telephone 01778 424159



The Len Pick Trust PO Box 92
Bourne PE10 1AD
Registered Charity No: 1106598
www.lenpicktrust.org.uk

Committed to Bourne

